

Data Sheet

H-Piece Valves Type RLV-KD for Valve Radiators - Blockable and Drainable

Application



RLV-KD straight
003L0240



RLV-KD straight
003L0241



RLV-KD angle
003L0242



RLV-KD angle
003L0243



Drain tap
003L0152

RLV-KD is a combined H-piece and lockshield valve for valve radiators in two-pipe systems. With RLV-KD every radiator can be individually isolated in order to carry out trouble-free maintenance without affecting the heating system.

H-piece valve type RLV-KD is nickel plated. It is available in straight and angle versions, with centre distance of 50 mm. Self sealing connection pieces ensures that RLV-KD can be used both for radiators with an internal thread of G 1/2 and with an external thread of G 3/4 A.

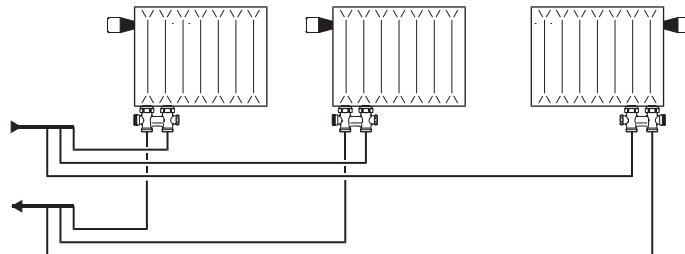
A fill and drain tap is available as an accessory to RLV-KD. The fill and drain tap is only available without nickel plating.

Connection to copper, soft steel, PEX and Alupex pipes is made with Danfoss compression fittings. See separate datasheet.

In order to avoid deposition and corrosion, the composition of the hot water should be in accordance with the VDI 2035 guideline (Verein Deutscher Ingenieure).

System



Two-pipe system



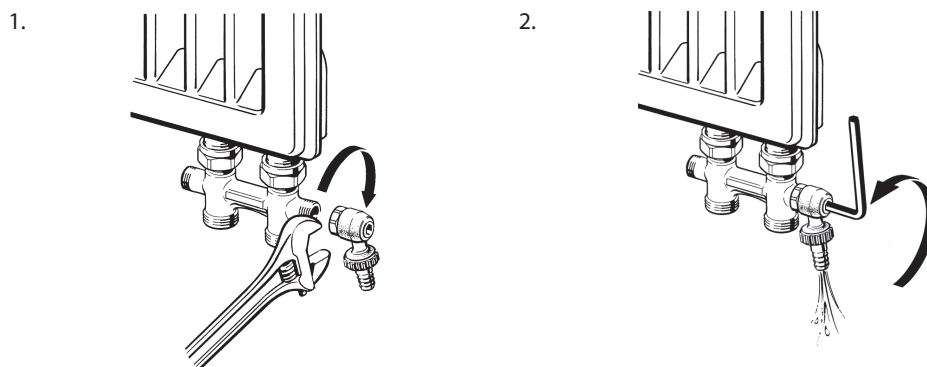
Data and Ordering

Type	Version	Connection		Max. operation pressure	Test pressure	Max. water temperature	k _{vs}	Code no.
		Radiator	System					
RLV-K	Straight	G 1/2 A	G 3/4 A	10 bar	16 bar	120 °C	1.0 m ³ /h	003L0240
	Angle		G 3/4 A					003L0242
	Straight	G 3/4 A	G 3/4 A					003L0241
	Angle		G 3/4 A					003L0243

Accessories

Product		Code no.
Fill and drain tap without nickel plating, with 3/4" external thread and hose nozzle		003L0152
Self-sealing connection nippel for valve radiator with G 1/2 internal thread		003L0249

Draining of the Radiator

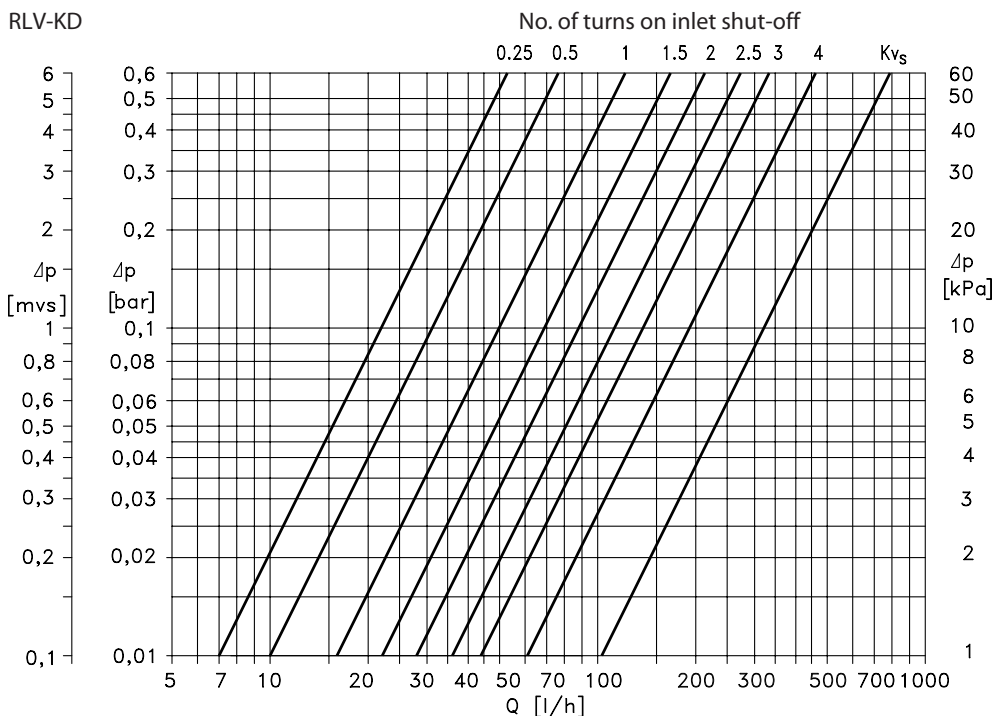


To drain the radiator, first unscrew the cover caps.

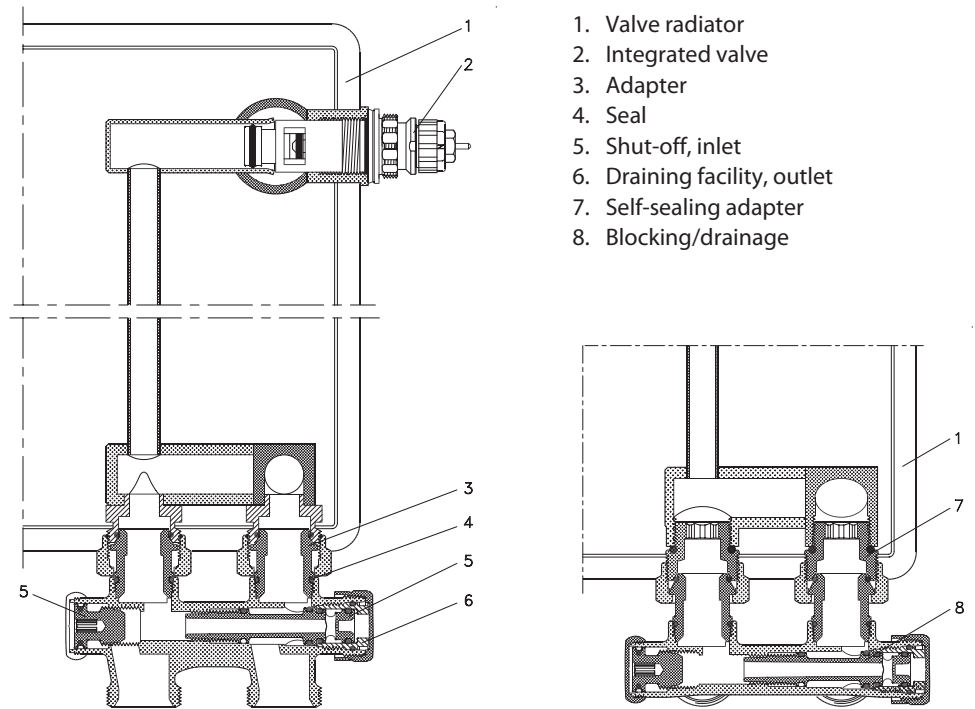
When the drain tap has been mounted (1), open by turning the Allen key (2).

Then shut off the inlet and return flow.

Capacities



Design

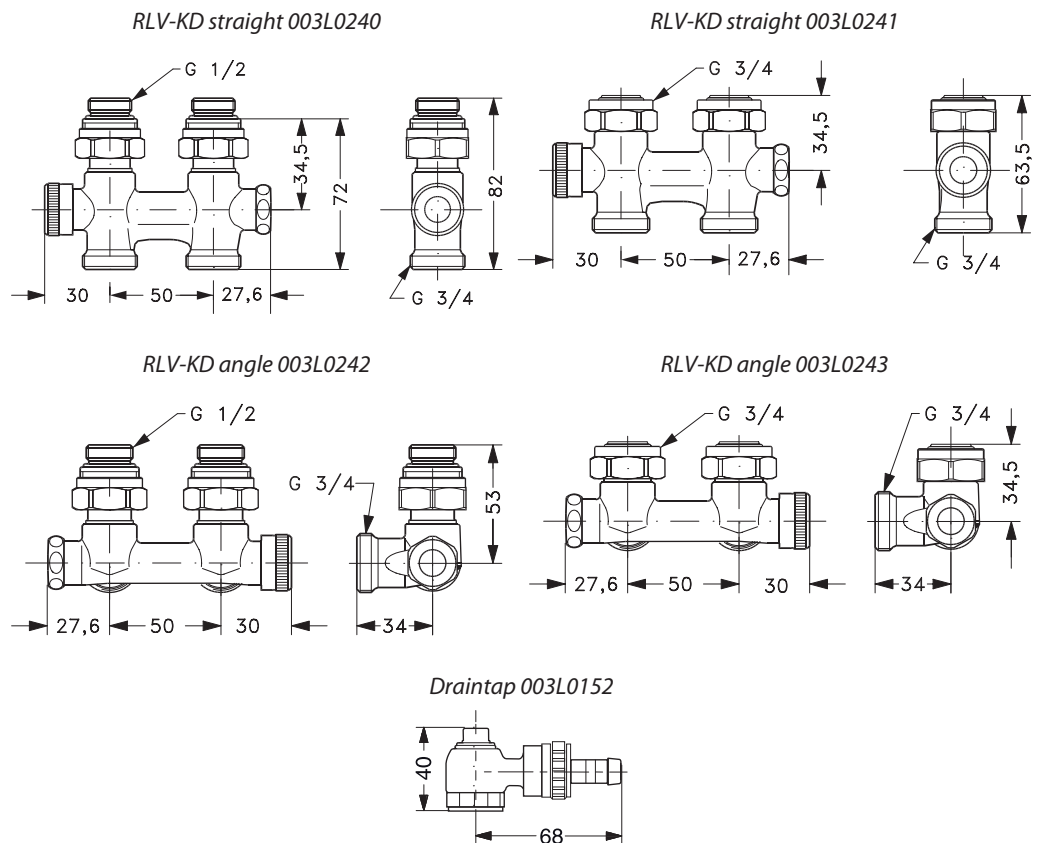


1. Valve radiator
2. Integrated valve
3. Adapter
4. Seal
5. Shut-off, inlet
6. Draining facility, outlet
7. Self-sealing adapter
8. Blocking/drainage

Materials in contact with water

Valve body and other metal parts	Ms 58
O-ring	EPDM

Dimensions



Danfoss A/S
Heating Solutions
Haarupvaenget 11
8600 Silkeborg
Denmark
Phone: +45 7488 8000
Fax: +45 7488 8100
Email: heating.solutions@danfoss.com
www.heating.danfoss.com

Danfoss can accept no responsibility for possible errors in catalogues, brochures and other printed material. Danfoss reserves the right to alter its products without notice. This also applies to products already on order provided that such alterations can be made without subsequential changes being necessary in specifications already agreed. All trademarks in this material are property of the respective companies. Danfoss and the Danfoss logotype are trademarks of Danfoss A/S. All rights reserved.
